

## JOB DESCRIPTION

<b>Job Title:</b> <b>Wireless Survey Engineer</b>	<b>Department:</b> Technical
<b>Reports To:</b> Operations Director	<b>Location:</b> Headquarters: 670 Eskdale Road, Winnersh Triangle, Wokingham
<b>Employment Status:</b> Full Time Permanent	<b>Salary:</b> Salary Negotiable on Experience
<b>Hours of Work:</b>  Monday to Friday 9am to 5.30pm	<b>Staff Responsibilities:</b> None  <b>Direct Budget Responsibility:</b> None  <b>Holiday Entitlement:</b> 22 days
<p><b>The Company:</b></p> <p>Founded in 2002 AIT provides a trusted source of advice on IT Infrastructure services and solutions to many of the world's largest companies and UK public sector organisations. AITs Data Centre and Energy Management Services and Solutions include Audits, DCIM and IoT software managed services and integration. Services and solutions for networks include WLAN surveys, design and installation, SD WAN, Security and Cloud networking solutions, Point to Point and Campus Wireless.</p> <p>The company employs 32 people in the UK and plans to double turnover in 3 years, increasing profitability across all divisions of the business delivering Digital Transformation technology and services to its customers.</p>	

### **Job Purpose:**

Reporting to our Operations Director you will join our highly experienced network engineering team delivering solutions to our customers. You will be able to work as part of the team or on your own to deliver IT support and services to our customers on their sites.

You will use the internal CRM system and ensure compliance with UK health and safety procedures as well as our own internal policies and procedures to:

- Carry out desktop, pre and post installation Wi-Fi Surveys
- Provide pre sales support to help the sales team close new business
- Provide post sales support where necessary
- Provide out of hours cover for maintenance contracts

### **The Candidate:**

The successful candidate will have experience of undertaken large scale desktop, pre and post installation Wi-Fi Surveys using Ekahau.

You will be able to generate, compile and technically qualify Wi-Fi Survey reports.

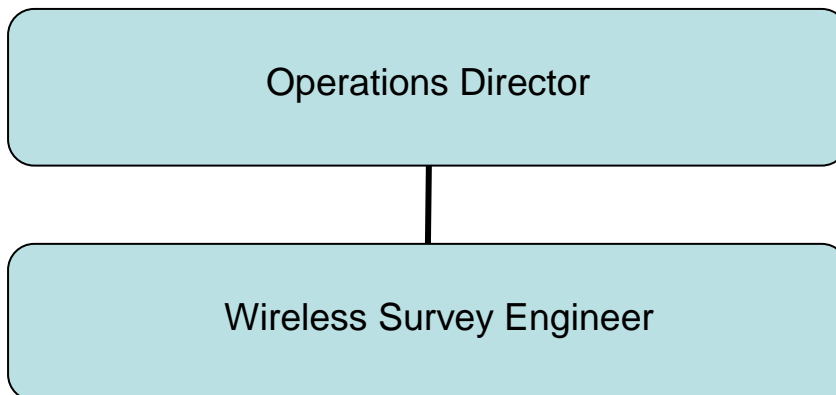
You should be a team player but also with the ability to work alone at times and understand the need for professional behaviour and exceptional service delivery to our customers. You will be a good communicator and used to being customer facing and understand the importance of excellent customer service for our clients.

You must have a full clean drivers licence.

You must be prepared to work long hours, work away from home and take part in the on call rota system supporting our customers with 24/7 maintenance support contracts.

**You must also be happy to go through DBS checking and customer/government led security clearance procedures to enhanced level.**

**TEAM STRUCTURE:**



**PERSON SPECIFICATION**

**Skills/Abilities/Experience:**

- Demonstrable experience in Ekahau and Airmagnet surveying / spectrum analysis software.
- A good understanding of IT/Networking.
- Experience of enterprise WLAN systems, Aerohive, Ruckus etc. Experience of Radius, NPS, VLAN and switching appliances, Brocade, Dell etc. would be advantageous.
- Ability to problem solve and empathise with the customer's needs
- Proactive
- Customer focused
- Ability to understand, translate and document customer requirements in detail
- Ability to communicate effectively at all levels (written and verbally)
- Knowledge of health and safety legislation

**Personal Qualities:**

- Ability to work flexibly and to assimilate a wide range of information
- Excellent communicator at all levels
- Dependable & flexible
- Diplomatic and tactful
- Team Player
- Positive/can do attitude
- Willingness to please
- Understands how to challenge people and processes effectively
- Excellent sense of humour
- Outgoing and confident